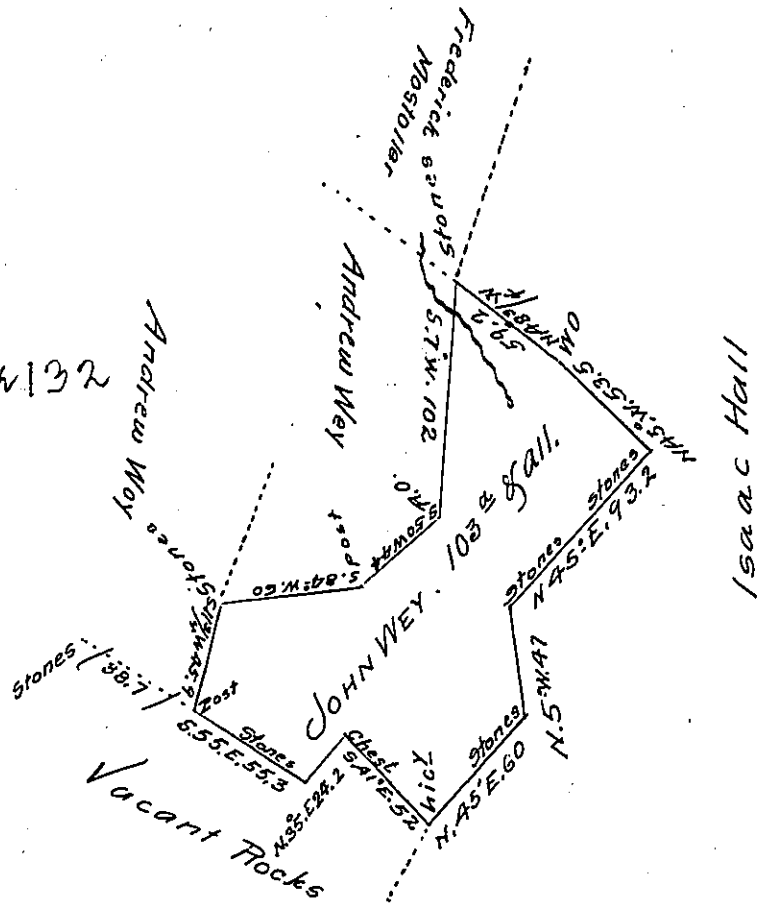


Page 132



Situate on the waters of Well's Creek in Somerset Township Somerset County including his Improvement first begun the first day of March 1801 whereon grain has annually raised & a family of persons have continued to reside from the commencement of the said improvement to this time (Viz) 6th May 1819 when it is surveyed in pursuance of a warrant dated the 19th day of ^{Mar} ~~May~~ 1813 granted to John Wey for 103^a

John Wells Deputy

To Jacob Spangler Esquire
Surveyor General of Penn^a

IN TESTIMONY that the above is a copy of the original remaining on file in the Department of Internal Affairs of Pennsylvania, made conformably to an Act of Assembly approved the 16th day of February 1833, I have hereunto set my hand and caused the Seal of said Department to be affixed at Harrisburg, this twenty-sixth day of June 1906

Henry Howell
Secretary of Internal Affairs.